

How to Install JMP 15 on Windows

Note: These screenshots were taken using Chrome. Downloading the software from another browser may differ slightly.

Before You Get Started:

- Make sure you are connected to GoucherWIFI if you are on campus. If you're off campus, connect using Cisco AnyConnect VPN.
- Make sure you have administrator rights on your computer. It will not allow you to install if you do not have rights.

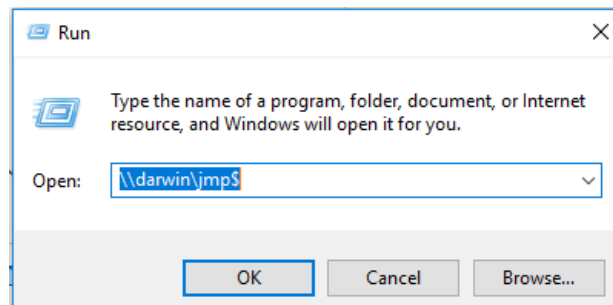
Instructions:

Part I: Download and Install the Software

1. On your computer, launch the Run command by pressing the **Windows** key and the letter "R" on your keyboard.



2. Type the following in the *Open* field: `\\darwin\jmp$` and hit **OK**.

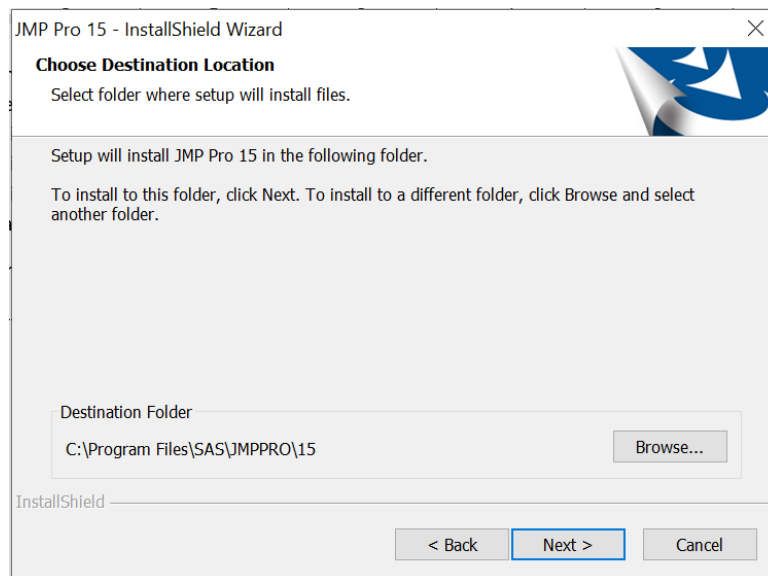


3. Enter `[username]@goucher.edu` in the *Username* field and then type in your Goucher password in the *Password* field. **Note:** replace [username] with your actual Goucher username.
4. Open the "SAS Software Depot (Windows)" folder and drill down to the following folder: JMP → JMP_Pro → 15_2 → Windows.

JMP_Pro > 15_2 > Windows

Name	Date modified	Type
0x0411	3/22/2016 6:57 PM	Configuration settings
0x0412	8/12/2016 2:08 PM	Configuration settings
0x0804	8/12/2016 1:54 PM	Configuration settings
data1	7/9/2020 8:34 PM	Cabinet File
data1	7/9/2020 8:34 PM	HDR File
data2	7/9/2020 8:35 PM	Cabinet File
ISSetup.dll	5/14/2018 1:48 PM	Application extension
layout.bin	7/9/2020 8:35 PM	BIN File
setup	7/30/2019 10:27 AM	BMP File
setup	7/9/2020 8:36 PM	Application
setup	7/9/2020 8:34 PM	Configuration settings

5. Then double click the **Setup** application icon.
6. Select **Yes** to install the application.
7. Click **Next** and follow the prompts keeping the default options.

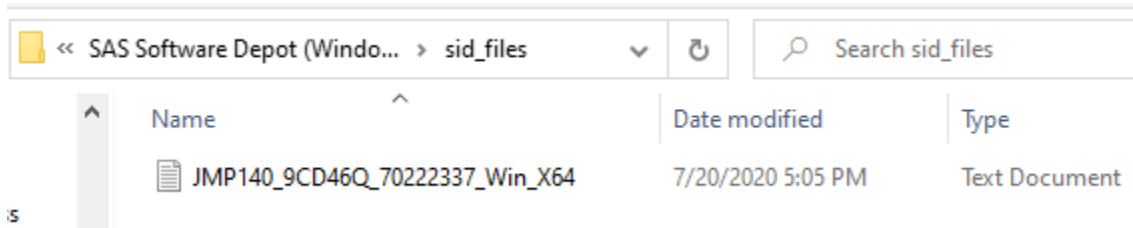


8. Click the **Install** button. This step may take a few minutes (longer if connecting from off campus using VPN).
9. Click **Finish** when done.
10. Launch **JMP 15 Pro** from the *Start* menu to make sure that the license file is installed. If not, move to Part II.

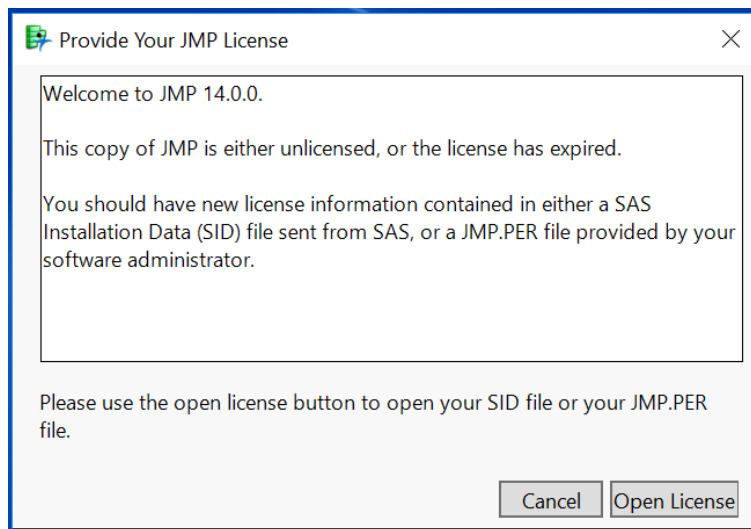
NOTE: If installed successfully, it should ask you to register your copy. Select **Wait to Register** to bypass.

Part II: Apply the License

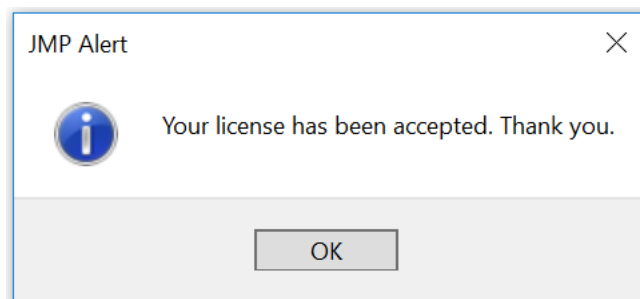
1. Open the **SAS Software Depot (Windows)** folder and then the **sid_files** folder from the Darwin drive.



2. Either drag or copy and paste a copy of the *JMP* text file to your desktop. **Note:** the name of the text file may differ from what is in the image.
3. Go to *Start* menu and launch the **JMP** application. You should be prompted with the following:



4. Click the **Open License** button and browse for the *JMP* text file that you saved to your desktop. You should then see the following message:

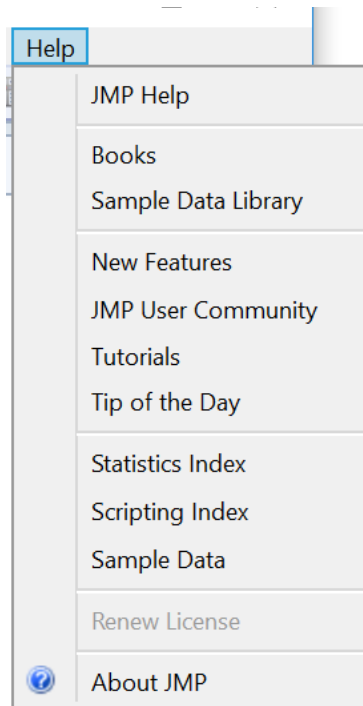


5. Click **OK** and JMP should launch to the startup.

NOTE: If you launch JMP and you're not prompted to install the latest license, check to make sure that your current license hasn't expired by going to the Help menu and selecting **About JMP**.

User: [REDACTED]
Administrator: IT
Organization: GOUCHER COLLEGE
Site ID: 70222339
Expires: 06/29/2020
Number of Users Allowed: 999
Microsoft Windows 10 Pro 64-bit (10.0.17134.0)

If the license has expired, then go to the Help menu and select Renew License. If the Renew License option isn't available, then you are most likely running the latest version.



Need further assistance, email the Help Desk at helpdesk@goucher.edu.