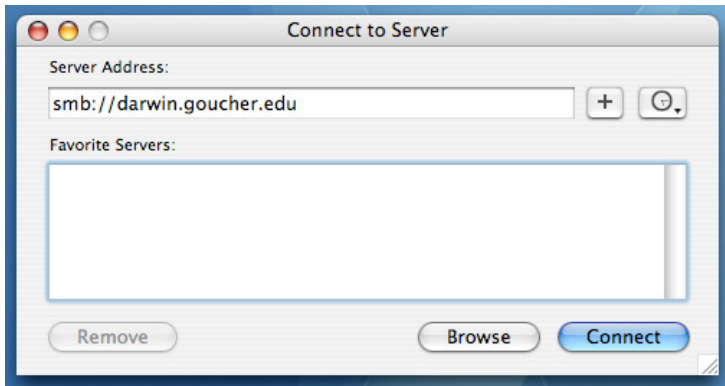
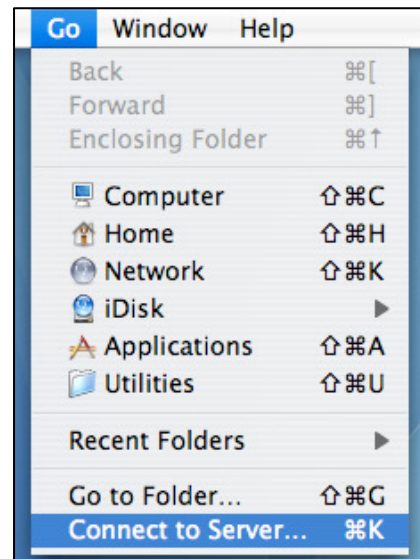


How to Access Network Folders on an Apple Computer

Before You Begin: You must have a working VPN connection first. If needed, follow the steps in [Setting Up A VPN Connection](#).

Network folders such as Darwin, Magellan, and Meyerhoff can be accessed from any computer on campus. However, the process is a bit different on an Apple computer. Below are instructions on how to access network folders on an Apple computer running Mac OS X.

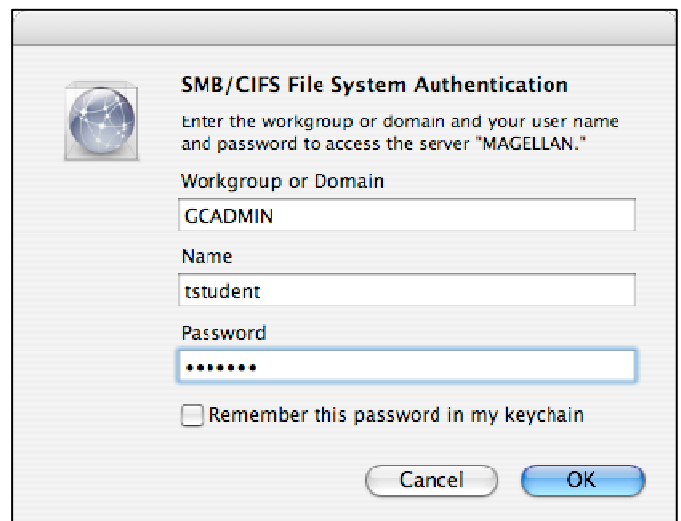
The initial steps of accessing network folders are the same for Darwin, Magellan, and Meyerhoff: Click **Go** and select **Connect to Server**.

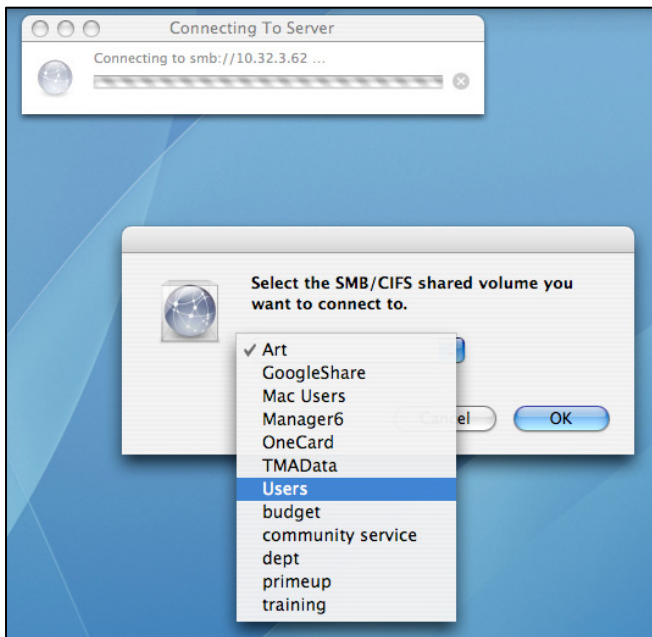


The Connect to Server window will appear. Type the path for the network server that you would like to connect to in the Server Address field. Here are the following addresses for each server:

Darwin - smb://darwin.goucher.edu
Magellan - smb://magellan.goucher.edu
Meyerhoff - smb://10.32.3.47

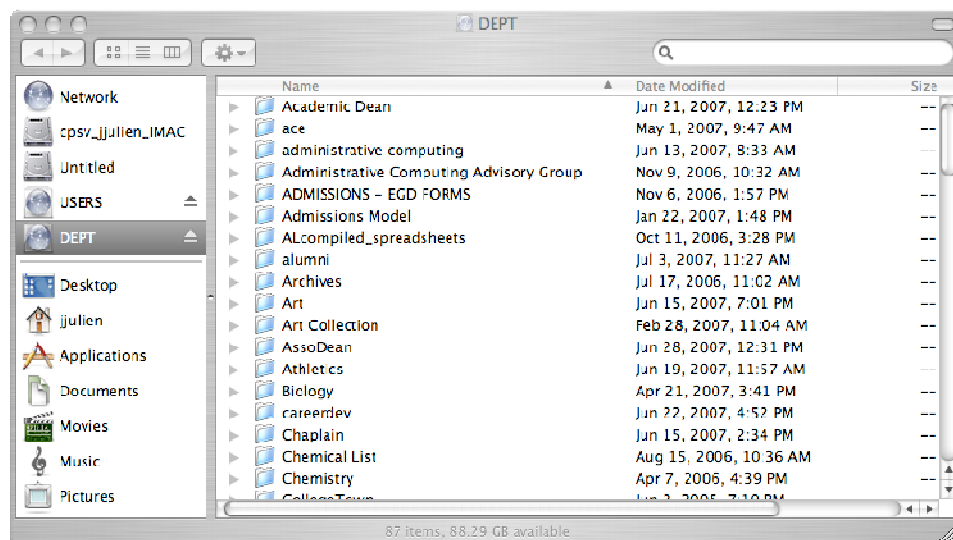
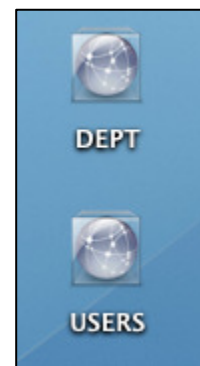
Once you've typed in the address and clicked **Connect**, enter your Goucher username and password click **OK** to continue.





Select the folder that you would like to access. This picture shows the options that are available when connecting to the Magellan server.

Once you've selected a folder, the icon will appear on the desktop and immediately launch the window displaying the contents.



It may take a few seconds for all the content to appear. Once the content appears, you will be able to open the folder(s) that you have been given permission to access.

Once you are done with the network folder, you may drag the icon to the **Trash** to disconnect.